



**CLIVEPEARCE**  
Now you're moving

2 Bedrooms

Flat/Apartment

No Offers

£205,000

Located in

Truro



[www.clivepearceproperty.com](http://www.clivepearceproperty.com)



# Brunel Court

Truro | Cornwall | TR1 3AE



A beautifully presented purpose built two double bedroom first floor apartment with allocated parking space and communal gardens ideally located close to Truro train station and a short walk from the city centre. Stylish kitchen with integrated appliances. Mains gas central heating and double glazing.



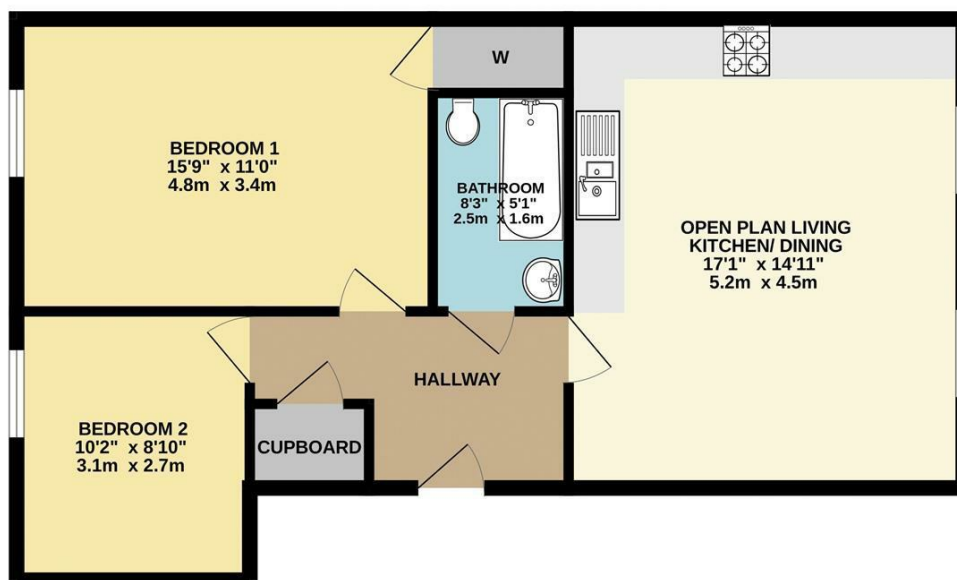
# Brunel Court

£205,000 Leasehold



- Two double bedrooms
- Stylish kitchen with integrated appliances
- Allocated off street parking space
- Double glazing
- Purpose built modern apartment
- Excellent presentation
- Thermostatic mixer shower over the bath
- Mains gas central heating
- Convenient city location

FIRST FLOOR  
663 sq.ft. (61.6 sq.m.) approx.



TOTAL FLOOR AREA: 663 sq.ft. (61.6 sq.m.) approx.  
Whilst every attempt has been made to ensure the accuracy of the floorplan contained here, measurements of doors, windows, rooms and any other items are approximate and no responsibility is taken for any error, omission or mis-statement. This plan is for illustrative purposes only and should be used as such by any prospective purchaser. The services, systems and appliances shown have not been tested and no guarantee as to their operability or efficiency can be given.  
Made with Metropix ©2025

## Council Tax Band B

## Local Authority

Agents Note: Whilst every care has been taken to prepare these particulars, they are for guidance purposes only. All measurements are approximate and are for general guidance purposes only and whilst every care has been taken to ensure their accuracy, they should not be relied upon and potential buyers/tenants are advised to recheck the measurements.

Energy Efficiency Rating		
	Current	Potential
Very energy efficient - lower running costs		
(92 plus) <b>A</b>		
(81-91) <b>B</b>		
(69-80) <b>C</b>		
(55-68) <b>D</b>		
(39-54) <b>E</b>		
(21-38) <b>F</b>		
(1-20) <b>G</b>		
Not energy efficient - higher running costs		
<b>England &amp; Wales</b>	EU Directive 2002/91/EC	

31 Lemon Street  
Truro  
Cornwall  
TR1 2LS



**CLIVEPEARCE**  
Now you're moving

hello@clivepearceproperty.com

01872 272622

www.clivepearceproperty.com